



SERVING THE FOOD INDUSTRY SINCE 1951

## HEAVY-DUTY ELECTRICAL MEAT MIXER

ITEM: #46149

MODEL: MM-IT-0180



Item# 46149  
Model: MM-IT-0180

Telephone: 1-800-465-0234

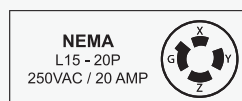
Fax: (905) 607-0234

Email: [sales@omcan.com](mailto:sales@omcan.com)

Website: [www.omcan.com](http://www.omcan.com)



Authorized Dealer



# HEAVY-DUTY ELECTRICAL MEAT MIXER

ITEM: #46149 MODEL: MM-IT-0180



## Features:

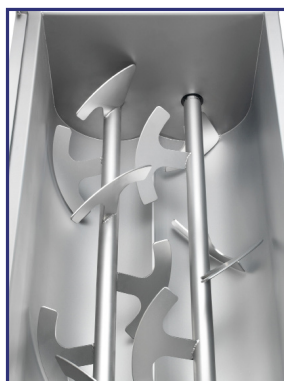
- Modern design and strong AISI 304 stainless steel construction
- Tilting tank with automatic locking system and safety lock
- Stainless steel swivel wheels (2 with locks and 2 without)
- Two mixing arms system
- Removable AISI 304 stainless steel mixing arms (no tools required)
- Total protection of gear box/control panel
- Oil-bath gear box, ground and tempered helical gears
- Double seal on tank and gear box
- ON/OFF/REV IP 67 s/steel controls with :  
(-manual forward and reverse, timer 1 min, auto reverse 2 min)
- Stainless steel cover with safety microswitch
- Minimum loading required: 40% max capacity
- Perfect for hard mix and salad



Tank Overturn



Tank Overturn

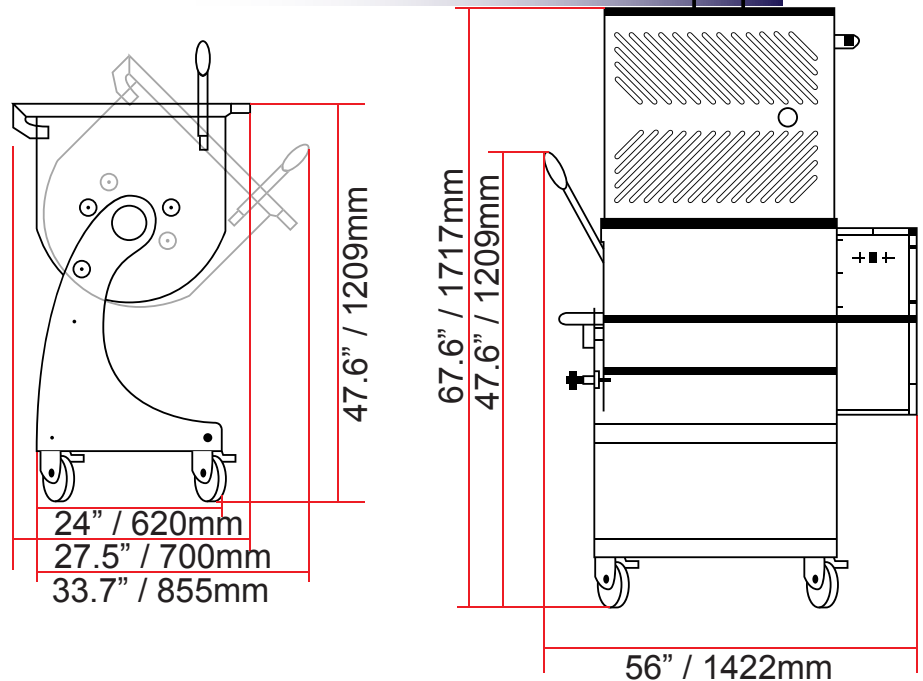


Mixing Arm

## PRODUCT SPECIFICATIONS

ITEM	46149
MODEL	MM-IT-0180
POWER	1100 W / 0.75 HP (x2)
ELECTRICAL	220 V / 60 / 3
TANK DIMENSIONS	39.2" x 21.7" / 995 x 550mm
CAPACITY	250 L / 180 kgs.
DIMENSIONS (DWH)	56" x 27.6" x 47.6" / 1422 x 700 x 1209mm
WEIGHT	335 lbs. / 152 kg.
GROSS DIMENSIONS	57.1" x 29.9" x 51.2" / 1450 x 760 x 1300mm
GROSS WEIGHT	440.9 lbs. / 200 kgs.

## 250 L ELECTRICAL MEAT MIXER



Telephone: 1-800-465-0234

Fax: (905) 607-0234

Email: sales@omcan.com

Website: www.omcan.com

